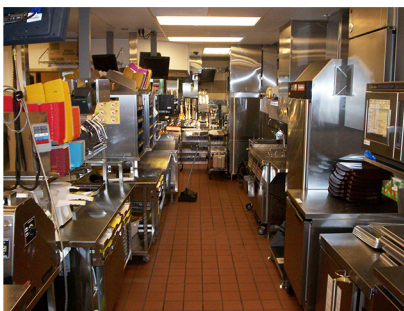


CCTV Cameras



HIKVISION



Fast paced food restaurants are ideal candidates for video security cameras. The long hours, employee turnover, high foot traffic, and numerous customers make fast food restaurants and franchises susceptible to theft and crime. A well installed video camera system will keep customers, employees, and the property safe.

CCTV Cameras



Entrance/Exit/Drivethrough Lanes/Dining Areas/Kitchen



All entrances, exits, dining areas, kitchen and drive-thru lanes should have fixed cameras covering them so you may record clear picture of every visitor or customer that exits or enters your restaurant.

CCTV Cameras

Cash Registers/Administrative Areas



Cash registers and administrative areas should also have fixed cameras installed covering them. This will help protect your assets and employees



Setting Up Fast Food Chain Security Security Cameras

Install cameras at all open areas such as lobbies, kitchens, dining areas, drive-through lanes, offices and cash registers.

Hikvision Range of Products



Fire Alarm System



What is Fire Alarm System?

Generally a fire alarm system is installed for protection of life, property and mission. In order for a fire alarm system to be useful, it must be able to perform these functions:

1. Detect the presence of a fire.
2. Notify the occupants
3. Notify the fire department (usually through a central station connection)
4. Operate other fire safety functions, e.g., release magnetically held open smoke doors.

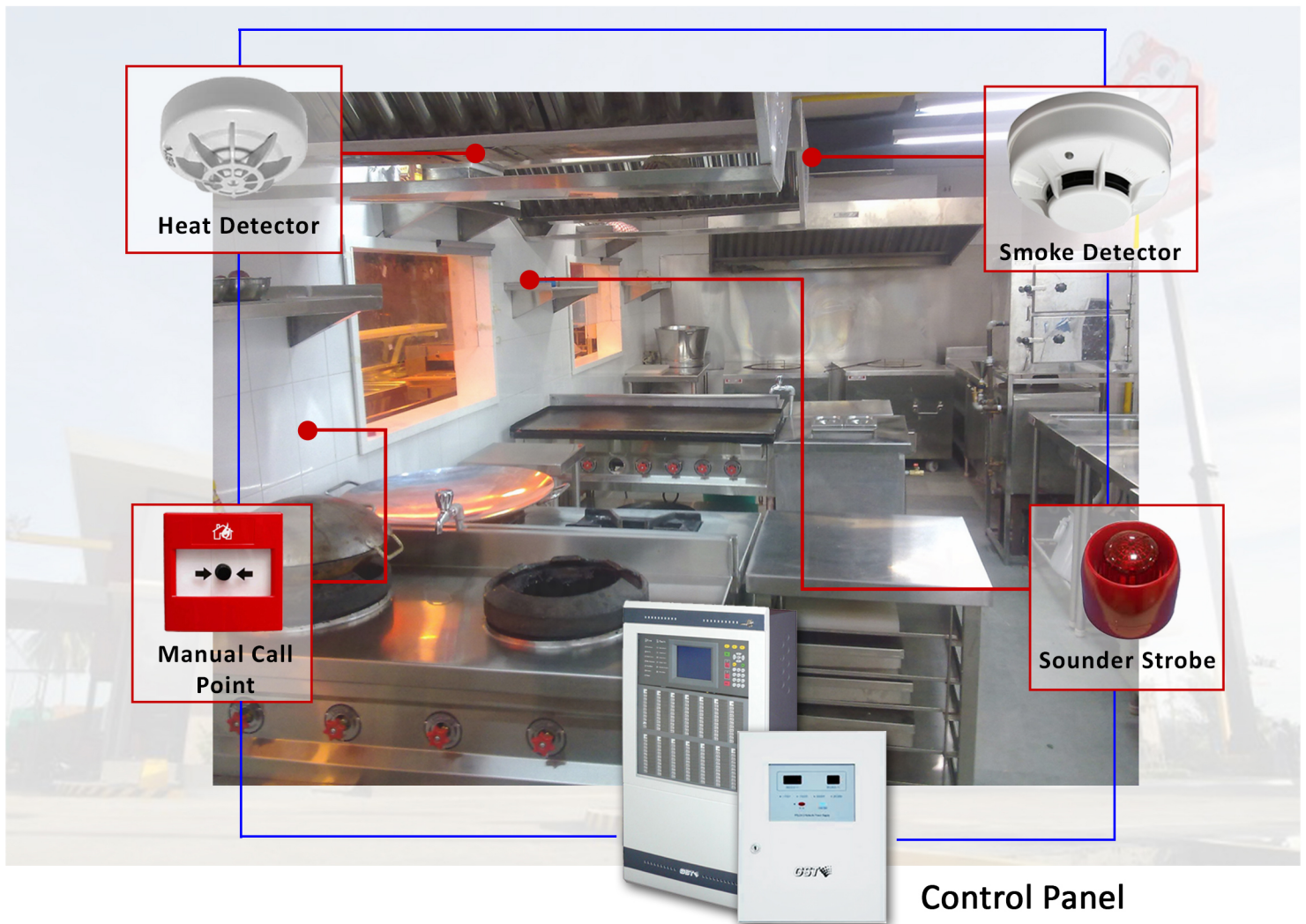
Advantages of Fire Alarm System

The main advantage of installing fire alarms is the early warning benefits it provides.

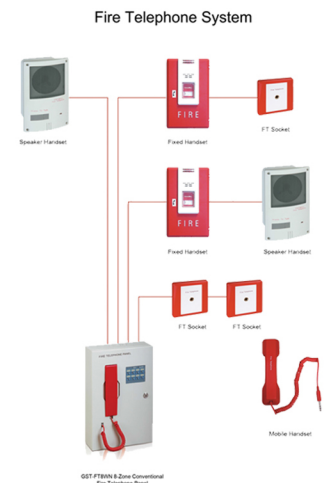
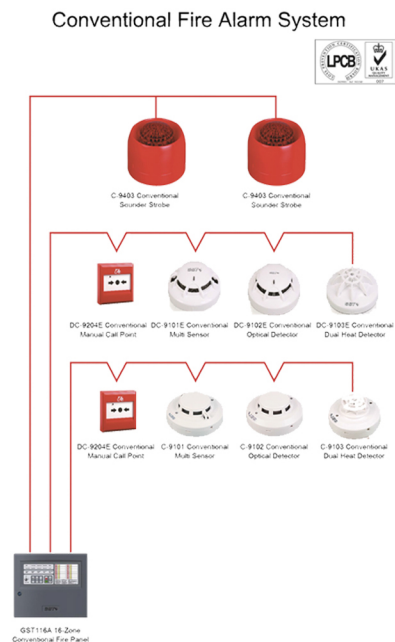
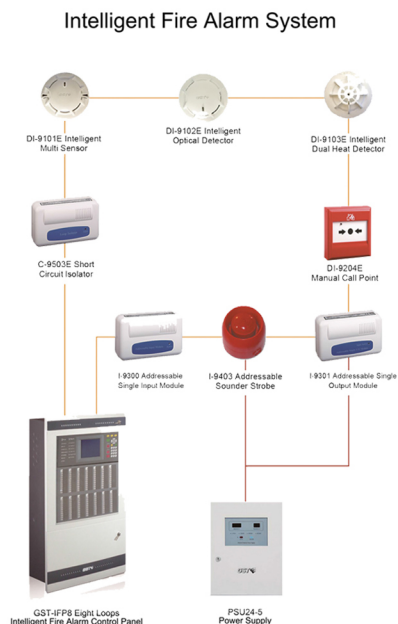
- Increases evacuation time for building occupants before a fire spreads out of control.
- Emergency medical help can be immediately sent out to those in need.
- Fire department personnel can help people exit the building safely.
- The location of the fire condition can be detected and located where it is occurring. This will improve response time for emergency respondents.

Fire Alarm System

Fastfood Restaurant (Kitchen)



Types of Fire Alarm System



Fire Alarm System

Fire Alarm Product Range

Explosion Proof Products



C-9101(EX)

Intrinsically Safe Combination Heat/Photoelectric Smoke Detector

- Drift compensation suits environment changing extensively
- Integrated algorithm for analyzing fire, improving the sensitivity highly
- Self-diagnostic
- Removable innovative sensing chamber, easy for maintenance



DI-9204Exd

Explosion Proof MCP

- Built-in 8-bit microprocessor control
- Electronically addressed by handheld programmer
- Non break-glass type, resetable by special key
- With wide temperature range, high ingress protection rating, the MCP can apply to vessels, outdoors and explosive hazardous environment



C-9103(EX)

Intrinsically Safe Conventional Rate of Rise and Fixed Temperature Heat Detector

- Rate of rise and fixed temperature alarm modes
- Twin LED for 360° view
- Built-in microprocessor selects and processes data in real time
- Designed to comply with EN 54-5 standard



C-9201(EX)

Intrinsically Safe Manual Call Point

- Re settable non-breaking glass



C-9403(EX)

Intrinsically Safe Conventional Sounder Beacon

- High intensity red LED flashing beacon
- Sound output 92dB at 1 meter
- 2 part construction for easy installation



C-9404(EX)

Intrinsically Safe Conventional Sounder

- Sound output 92dB at 1 meter
- 2 part construction for easy installation

Conventional Fire Alarm Panels

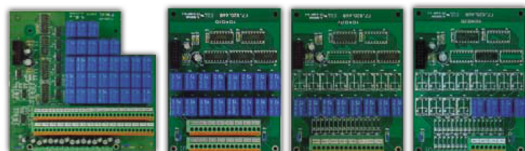


**GST101 • GST102
GST104 • GST108
GST116**



Conventional Fire Alarm Panels

- LPCB Approved
- 1/2/4/8/16 zone conventional fire alarm panels
- Both End of Line Resistor and Active End of Line can be used
- Day/night mode selected (not valid for GST101&GST102)
- Zone isolate control
- Key-control evacuation over-ride
- Repeater output available
- Fire alarm output for remote alarm
- Class change terminal for remote control
- Active EOL enables multiple alarm reporting from same zone
- Active EOL max 15 fire detectors and infinite manual buttons each zone
- Resistor EOL up to 25 detectors and infinite manual buttons each zone
- Optional relay output board



RB1XX Series

Relay Board

- Accessory of conventional fire alarm control panels
- Relay board for additional fire and fault signal outputs



GST-RP16

16 Zone Conventional Repeater Panel

- Compatible with GST102/4/8/16
- Powered from FACP directly
- Zonal Fire and general Fault indication
- Dimension: 280mm x 110mm x 46mm



Conventional Fire Alarm Control Panel

- Single zone conventional fire panel
- Compact design
- Suitable for both Active and resistor end of line monitoring.
- Similar features as standard GST101

GST101S



GST101S

Active End of Line

- Active End of Line for conventional fire detection zones
- Can be used as conventional detector base or work independent with a cover
- Provides detector removal indication while still enabling alarms down stream of the missing device to be detected
- Compatible with all GST conventional panels
- Compatible with addressable zone interface I-9319
- Compatible with C-9101/2/3/4
- Dimension: Diameter 103mm, Height 37.4mm



Revised Conventional Fire Panel

- Pleasing colour and fascia design
- Re-arranged indication and operation panel
- Simplified user operation
- Comply to latest EN54 standard
- Pending panel under development

**GST-101 • GST-102
GST-104 • GST-108
GST-116**

Fire Alarm System

Fire Telephone System



GST-FT8WN

Fire Telephone Panel

- 8 Zone conventional fire telephone center
- 2-way voice communication
- Networkable up to 8 Fire Telephone panels
- Call divert to the main panel
- Operator can select single or group call
- Operator can ring outstations and fixed handsets
- Call panel to panel
- Up to 10 communication points can be connected to each zone using socket jack
- Network cable monitored
- Communication line monitored
- Wall mounted



GST-FT24N

Fire Telephone Panel

- 24 Zone addressable fire telephone center
- 2-way voice communication
- Networkable up to 8 Fire Telephone panels
- Call divert to the main panel
- Automatic record of conversation
- Operator can select single or group call
- Operator can ring outstations and fixed handsets
- Call panel to panel
- Up to 10 communication points can be connected to each zone using socket jack
- Network cable monitored
- Communication line monitored
- 19"/3U standard rack mount



P-9911(S)

Speaker Fire Telephone Outstation

- Hand-free extension of Fire Telephone System
- Compatible with all GST conventional fire telephone handsets in same zone
- Dimension: 172mm x 106mm x 70mm



P-9911(F)

Fixed Fire Telephone Handset

- Fixed extension of Fire Telephone System
- Open box and lift receiver to communicate with central control
- Compatible with all GST conventional fire telephone handsets in same zone
- Dimension: 234mm x 146mm x 60mm



P-9911(J)

Fire Telephone Jack Socket

- Simply insert mobile handset into jack to establish communications with the control centre
- Compatible with all GST conventional fire telephone handsets in same zone
- Dimension: 85mm x 85mm x 12mm



P-9911(M)

Fire Telephone Mobile Handset

- Mobile handset compatible with GST fire telephone jacks
- Dimension: 210mm x 50mm x 50mm

Digital Intelligent Devices




DI-9102 

Digital Intelligent Optical Smoke Detector

- Advanced digital communication
- Built in 8 bit microprocessor
- Algorithm maps for faster response and false alarm rejection
- Secure and speedy communication
- Intelligent drift compensation
- Self diagnosis and history log
- Electronic addressing
- Duplicated address report
- Sensing chamber for exceptional dust proof ability and LED for 360° vision
- Built in remote indicator output
- Unique low profile design
- EN54 compliance



DI-9103 

Digital Intelligent Dual Heat Detector

- Built in 8 bit microprocessor
- Advanced digital communication
- Secure and speedy communication
- Self diagnosis and history log
- Electronic addressing
- Duplicated address report
- LED for 360° vision
- Built in remote indicator output
- Unique low profile design
- Fixed temperature response is adjustable
- EN54 compliance




DI-9101

Digital Intelligent Multi Sensor

- Combined all the features of DI-9102 Optical and the DI-9103 Heat detector
- Advanced digital communication
- Electronic addressing
- LED for 360° vision
- Sensing chamber for exceptional dust proof ability
- Ideal alternative to Ionization detector
- Low profile design

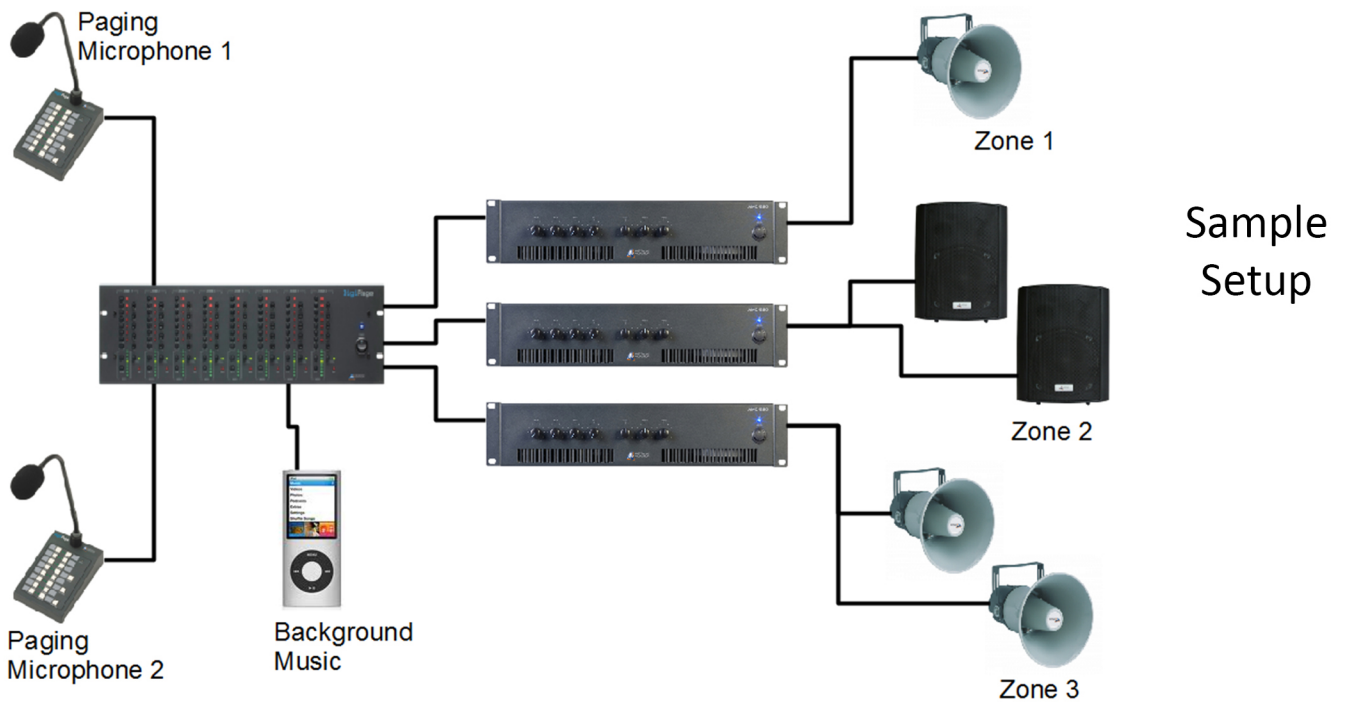


DI-9204 

Digital Manual Call Point

- Re-settable (non-breaking glass) via special key
- Advanced digital communication
- Electronically addressing
- Friendly installation and test
- Wiring before termination
- Semi-flush mount installation
- Optional back-box for surface mount
- Stylish pleasing design
- LPCB Approved

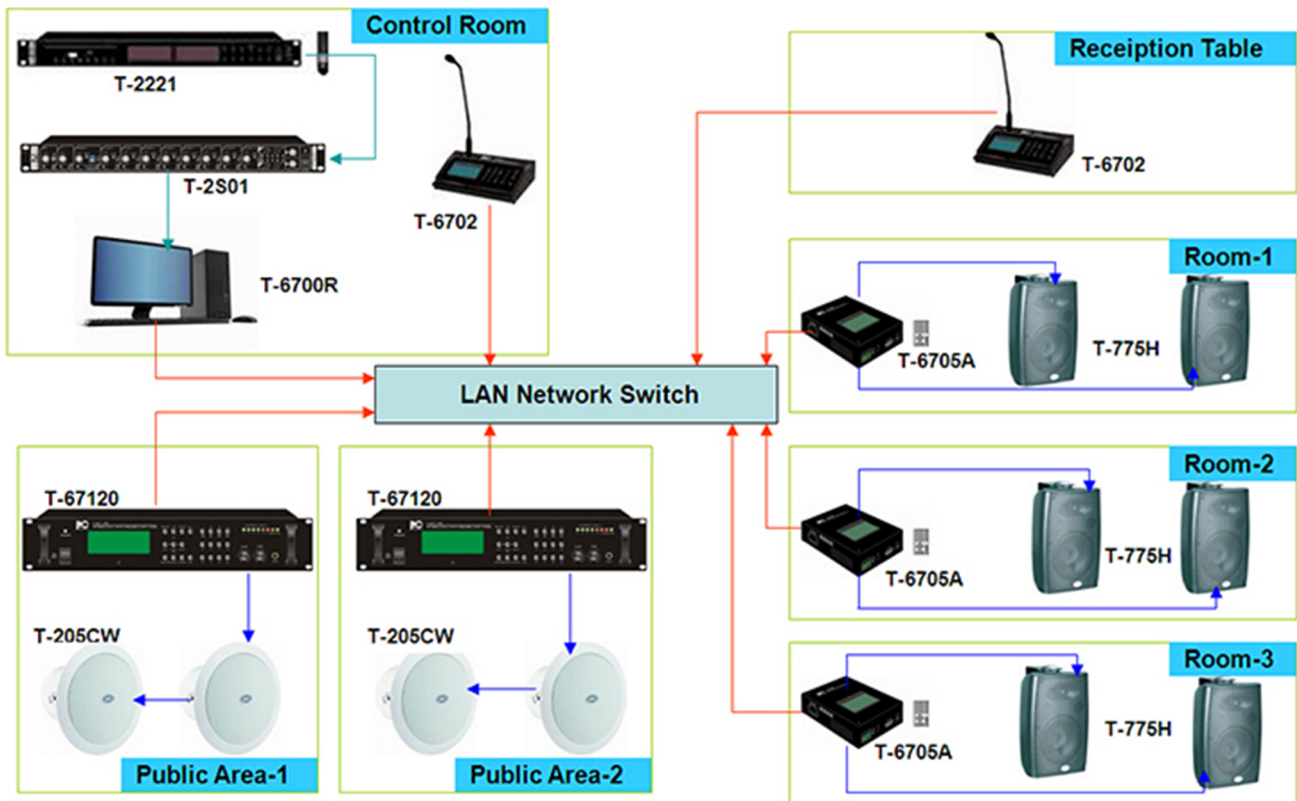
Public Address System



Today, most modern fastfood restaurants offer different dining experiences in one location. The public address system needs to be flexible enough to manage background music and voice announcements in all areas.

Public Address System

Professional 5 Zones IP Network PA Audio System (T-67120)



System Features:

- Digital audio system over LAN network
- Minimum cable wiring system
- Simplest cable layout & maintenance & future upgrade
- Different programs for different zones
- Versatile specified zone, group zone and all zone paging
- Two way communication system between remote paging microphones
- Local music and microphone input
- Terminal user with remote control to select program
- Remote PC log in, remote control, set up and trouble shoot
- Expansion only by add network audio adapter
- Capacity of up to 7,000 zones
- Optional features: remote telephone paging system, voice alarm system, intercom system, free-to-talk communication system, emergency button push for voice message broadcast and emergency intercom system, integration with door access system and CCTV security system.

Public Address System

Product Range



T-218(A) Paging Microphone

Features

- * With operation number input keys and LED display
- * Capacity of manage 30 paging selectors T-6212(A), up to 300 zones
- * Max remote control distance up to 1Km
- * With microphone volume control
- * RCA line input and output
- * Built-in chime and chime volume control
- * Max 16 microphone work together with RJ45 port in series connection



T-104C 4 Inch Fireproof Ceiling Loudspeaker

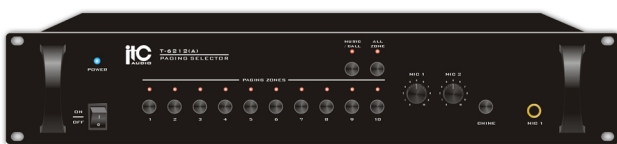
Features

- * 4" fireproof version ceiling speaker
- * Built-in 100V & 70V transformer
- * Ceramic connector, thermal use and fire-resistant cable
- * 3W-6W at 100v output
- * Metal enclosure, aluminum grille with fire dome
- * Fast installation by spring clip
- * Excellent response for background music and voice message
- * EN54-24 certification is under taken
- * Painted in white color

T-104C 5 Inch Ceiling Loudspeaker

Features

- * 5" full range superior quality ceiling speaker
- * Good quality driver of excellent frequency response
- * 5 power taps of 0.75W, 1.5W, 3W, 6W @100v
- * Metal baffle, metal grille
- * Easy spring clip installation
- * Metal back box could be added



T-6212(A) 10 Zone Paging Systems

Features

- * Built-in 10 zone selector and paging selector, which can be expanded to 300 zones
- * Work together with remote paging console for paging and control over 10 zones.
- * Individual zone, group zones, 10 zones and all zones paging through remote paging console.
- * With memory function when power off, can realize the restoration after electricity be turn on

WiFi System

UniFi™

Unified WiFi Management
Scale to Thousand
ENTERPRISE WIFI



Model Comparison



	UAP	UAP-LR	UAP-PRO	UAP-AC	UAP-Outdoor+	UAP-Outdoor5	UAP-AC Outdoor
Frequency	2.4 GHz	2.4 GHz	2.4 GHz, 5 GHz	2.4 GHz, 5 GHz	2.4 GHz	5 GHz	2.4 GHz, 5 GHz
2.4 GHz Throughput	300 Mbps	300 Mbps	450 Mbps	450 Mbps	300 Mbps	N/A	
5 GHz Throughput	N/A	N/A	300 Mbps	1300 Mbps	N/A	300 Mbps	
Range	122 m	183 m	122 m	122 m	183 m	183 m	



Designed for the Future of the Internet

The UniFi AC AP delivers the throughput needed for bandwidth-intensive applications, including HD video streaming, interactive online gaming, and cloud services.



Innovative Antenna Design

The innovative antenna design provides a long-range, symmetrical-link coverage area, and the antenna gain of the UniFi AC LR AP performs better than one-way, high transmit power does for connecting distant clients.



	UAP-AC-LITE	UAP-AC-LR	UAP-AC-PRO	UAP-AC-EDU
Dimensions	ø160 x 31.45 mm	ø175.7 x 43.2 mm	ø196.7 x 35 mm	ø287.5 x 125.9 mm
Environment	Indoor	Indoor	Indoor/Outdoor	Indoor
2.4 GHz Speed	300 Mbps	450 Mbps	450 Mbps	450 Mbps
5 GHz Speed	867 Mbps	867 Mbps	1300 Mbps	1300 Mbps
PoE Mode	24V Passive PoE	24V Passive PoE	802.3af PoE/ 802.3at PoE+	802.3at PoE+ Compatible
Ports	(1) 10/100/1000 Ethernet	(1) 10/100/1000 Ethernet	(2) 10/100/1000 Ethernet	(1) 10/100/1000 Ethernet



No Software Fee



Scalable Enterprise Wi-Fi Management



Rapid Deployment



Amazing Long-Range Links



Simultaneous Dual-Band Wi-Fi



Scalability for Thousands

Accessories

TOUGH Switch

Advanced Power over Ethernet Switches



24V/48V Passive PoE
5 GbE PORTS
8 GbE PORTS
16 GbE PORTS

The TOUGHSwitch™ delivers reliable passive PoE and Gigabit connectivity to attached Ubiquiti devices and other devices that support passive PoE.
Models: **TS-16-CARRIER**, **TS-5-POE**, **TS-8-PRO**



15 VOLT
24 VOLT
48 VOLT
50 VOLT

PoE Adapters

Power over Ethernet Adapters

PoE Adapters power Ubiquiti® products that support passive PoE.

Models: **POE-15-12W**, **POE-24-12W**, **POE-24-12W-G**, **POE-24-24W**, **POE-24-24W-G**, **POE-48-24W**, **POE-48-24W-G**, **POE-50-60W**



1 GBPS
24 AWG

TOUGH Cable

Outdoor Shielded Ethernet Cable

The industrial-grade, Category 5e TOUGH Cable™ protects your networks from the most brutal environments.

Models: **TC-CARRIER**, **TC-CON-100**, **TC-GND**, **TC-PRO**



1 GBPS
15 VOLT
24 VOLT
24 VOLT
50 VOLT

Ethernet Surge Protector

Ethernet to Ethernet Grounded ESD Protection

The ETH-SP is engineered to protect any Power-over-Ethernet (PoE) or non-PoE device with connection speeds of up to 1 Gbps.

Models: **ETH-SP**